

Board of Directors

Sam Dispenza	Chariman
Ron Gilkey	Vice Chairman
Gerrie Ashley	Recording Officer
Billie Fortenberry	Financial Officer
Fred Allen	Member
Steve Rabalais	Member
Torris Pelichet	Member
Rehnea Sharp	Member
Joey Albert	Member
Keith Dantin	Member
Chip Arnould	Member

Supervisory Committee

Angela Brewster	Shaw Group
Joyce Buchanan	Government St.
Jack Hatcher	Essen Lane

Member Representatives

Cheryl Dispenza	Government St.
Debbie Dodson	Nelson Station
Claudia Hurst	Riverbend
Rodney Whitley	Riverbend
Tim Williams	Riverbend
Bill Stuart	Riverbend
Lisa Creekbaum	Riverbend
Cindy Ibert	North Blvd.
Joyce Buchanan	Government St.
Dana Boyd	Sterlington
Roy Hodgson	Willow Glen
Gary Kling	Louisiana Station
Ruebin Gourley	Louisiana Station
Dana Woods	Choctaw
Gwynne Tullier	Choctaw
Judy Israel	Choctaw
Sherri Eschete	Choctaw
Lloyd Brandon	Hammond
Mary S. Moore	Denham Springs
Lena Moran	Essen Lane
Ella Kirby	Port Allen
Larry Myers	Port Allen
Gwen Triplett	Zachary
Brenda Juneau	Lake Charles
Pam Romano	Reserve
Sharon McAdams	Denham Springs
Candace Daigle	Ferris Engineering
Theresa Coleman / Deborah Moran	Vector Electric
Paul Blouin	LA One Call
Jan Norris	Power & Control Systems
Judy Hergruder	East Jordan Iron Works
Valerie Deshotels	Cox-Walker
Terry McGarity	Englobal Engineering
Mary Beth Harris	Spectrum Engineering
Lisa Baker	Sunland Fabricators
Christy Cassells	Wampold Companies
Lisa Burgess	Shaw APP
Kenneth Dupaty	Shaw Group
Simone Landry	Shaw Group
Mary Poole	Shaw Group
Nikki Jordan	Shaw Group
Elizabeth Triche	Shaw-Syngenta
Darryl Jones	Michoud
Michael Allen	Magnolia
Mac Leger	Lafayette
David Martinez	Little Gypsy
Rhonda Ramirez	Sunland

REMEMBER... Immediate family members of our sponsor companies and retirees including spouse, child, sibling, parent, grandparent, grandchild, stepparents, stepchildren, stepsiblings and adoptive relationships can become Breco FCU members!

LOCATIONS AND HOURS

Main Office 1850 S. Sherwood Forest Blvd. Baton Rouge, LA 70816 (225) 273-1529 (225) 273-4697 Fax Toll Free: 1-800-361-1631 Loan Line: (225) 381-5790 Breco 24: 1-866-234-2117	North Blvd. Branch 446 North Blvd. Baton Rouge, LA 70802 (225) 381-5791 8-555-5791 Inside Entergy (225) 381-5783 Fax
--	--

Shaw Satellite Office
 Office, 225-932-5859
 (225) 932-5860 Fax

Hours: Monday - Friday 9:00 am - 5:00 pm
 Drive-Thru Hours - 8:00 am - 5:00 pm
 Website address: www.brecofcu.com

ATMs:

Main Office (Drive thru) • Riverbend Nuclear Plant

Credit Union Service Centers

Baton Rouge - 7018 Siegen Lane
 Harvey - 1520 Westbank Expwy.
 Metairie - 5500 Veterans Blvd. #100
 Shreveport - 5804 Line Ave
 Mandeville - 1291 N. Causeway Blvd, Suite 3.

Monday - Friday 9:00 am - 7:00 pm
 Saturdays 9:00 am - 5:00 pm

Other outlet locations available nationwide.
 Call for the location nearest you.

Staff

Main Office:

Ronnie Stephens, *President & CEO*
 Cheryl Kirby, *Asst Manager*
 Melissa Firmin, *Bookkeeper*
 Brenda Simpson, *Loan Officer*
 Yolanda Gilmore-Sampson, *Head Teller/Electronic Data Processor*
 Demetria Brumfield, *Teller/Member Services Representative*
 Latasha Harris, *Teller/Member Services Representative*
 Christy O'Neal, *Business Development Officer*
 Lori Vige', *Operations Assistant*

North Blvd.:

Kim Falgout, *Branch Manager & Senior Lender*
 Mary Tillmon, *Member Services Representative*
 Carmen Araya, *Teller/Member Services Representative*

Shaw Satellite Office:

Ina Kendall, *Asst Manager*



Quarterly Notes



Mission Statement:

"To Improve Our Members' Financial Position"

For Members of Breco Federal Credit Union

Fourth Quarter 2005

Something Left Undone?

- ? Pick up clothes at Dry Cleaners
- ? Take the dog to the Vet
- ? Dental appointment - 2 pm Monday

? Prepare and File my Taxes



Do your taxes the easy way! Go to www.brecofcu.com and click on the TurboTax® OnlineSM link. It's as easy as 1-2-3:

1. Guides you through your return step-by-step.
2. Double-checks your return for accuracy.
3. Files your return electronically.

TurboTax® OnlineSM is updated with the new tax law changes to help you get every deduction and tax savings you deserve. Have your tax refund directly deposited into your account and receive your refund in as little as 7-12 days.

Here's why your IRA should be with us...

If you don't have an IRA, you owe it to yourself and your financial future to start your account now. And even if you have an IRA somewhere else, there are some compelling reasons for moving your account here.

Our rates are competitive, your account is insured, and we pay particular attention to your personal financial needs. At Breco Federal Credit Union you are a member, not just a customer.

Since April 15, 2006 falls on a Saturday, the IRS allows until Monday, April 17th to make your IRA contribution for tax year 2005. For tax year 2005, the annual contribution limit is \$4,000 - if you are over 50 you may make an additional

"catch up" contribution of \$500 for a total of \$4,500.

To contribute to a Traditional IRA you must have earned compensation and be under age 70. To make a contribution to a Roth IRA you must have earned compensation and your income cannot exceed certain limits (Roth contributions are allowed at any age).

Starting your IRA or transferring it to the credit union, could be one of the best financial moves you'll ever make. If you would like more details or have any questions, call one of our IRA Specialists today at 225/932-5859 OR 225/273-1529.

SAVINGS RATES

Regular Shares, IRAs and Christmas Club: 1.25% (1.26% APY) – Rate paid during last quarter. Dividends declared at end of each quarter.

*Must maintain minimum average daily balance of \$25.00 to earn dividends.

Checking Accounts: .75% (.75% APY) - No monthly service charge, no per check fee, direct deposit available, free debit card

*Must maintain minimum average daily balance of \$100.00 to earn dividends.

Term Share Certificates

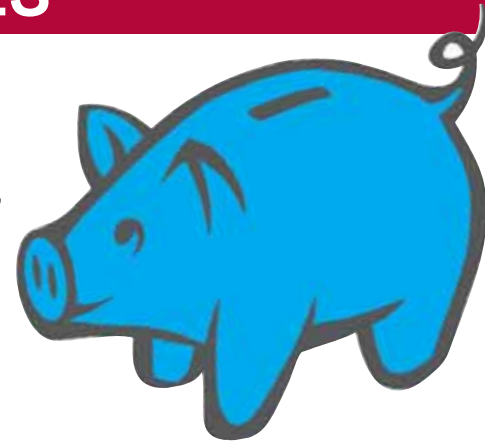
(\$500 Minimum)

6 months - 3.49% APY (3.44%)
 12 months - 3.90% APY (3.83%)
 18 months - 4.04% APY (3.97%)
 24 months - 4.25% APY (4.17%)
 36 months - 4.50% APY (4.41%)
 48 months - 4.75% APY (4.65%)
 60 months - 5.00% APY (4.89%)

(\$10,000 Minimum)

6 months - 3.60% APY (3.54%)
 12 months - 4.00% APY (3.93%)
 18 months - 4.17% APY (4.07%)
 24 months - 4.35% APY (4.26%)
 36 months - 4.60% APY (4.51%)
 48 months - 4.85% APY (4.74%)
 60 months - 5.10% APY (4.98%)

APY = Annual Percentage Yield. Rates current as of January 1, 2006. Rates subject to change without notice. Penalty for early withdrawal.



The Home of Your Dreams

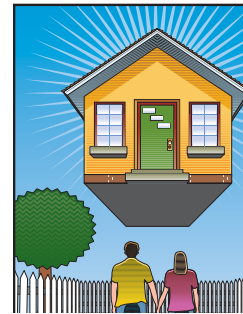
Are you thinking of building your own home, but are afraid of the process, the paperwork, and the hassle?

If you feel it's time to move up and would like to build your own home, here's the good news: it's never been quicker or easier. Breco FCU now offers a mortgage financing option for new construction with a unique single-close loan.

The first step is calling the credit union. We'll put you in touch with a real estate construction financial expert who will

walk you through the entire process.

Even if you're just thinking about it and have not yet reached the planning stages, call us at 225-381-5791 and we'll schedule a free consultation for you. Because Breco FCU is your stress-free source for home-building information and loan products, calling us is the first step to making your dream come true.



Congratulations to our last newsletter winner, Lewis Burruss who won a \$50 gift certificate.

Don't forget to enter this edition's drawing below.

Win a \$50 Gift Certificate to the Restaurant of Your Choice!!!

Simply answer the questions below and send your completed entry to L-SHER-BCU or 1850 S. Sherwood Forest Blvd., Baton Rouge, LA 70816. The answers to all of the questions are found in this newsletter. The deadline to enter is February 25, 2006. A winner will be drawn from among all of the correct and completed entries.

1. What is the new mortgage financing option Breco offers? _____
2. Name one reason why your IRA should be with Breco FCU? _____
3. Name one example of an immediate family member that can join our credit union? _____

Name: _____ Phone #: _____

LOAN RATES

New Auto & Motorcycle: Up to 100% financing, .25% discount for 10% down, .50% discount for 20% down
 4.99% - 12.99% APR Terms from 24 - 72 months (72 month term available ONLY on loans over \$25,000)

Used Auto & Motorcycle: Up to 100% financing, .25% discount for 10% down, .50% discount for 20% down: (Loans up to NADA Retail Value)
 4.99% - 14.74% APR Terms from 24 - 60 months (60 month term available ONLY on loans over \$10,000)

Signature: Borrow up to \$15,000 for personal needs.
 7.95% - 18.00% APR
 Terms from 24 - 60 months

Student Tuition: Borrow up to \$15,000 for school tuition.
 6.95% - 13.95% APR Terms from 9 -12 months

Share & Share Certificate Secured: Borrow against funds in your regular share account or share certificate
 Share Secured - 4.00% APR
 Share Certificate Secured - 2.0% APR above certificate rate

Home Equity: Borrow on the equity in your home. Up to 100% Loan to Value.
 6.25% - 15.25% APR – Terms from 5 – 15 years

Home Equity Line of Credit Up to 100% Loan to Value. Credit card and check access to your line.
 6.25% APR – Adjustable rate

1st Mortgages: 15, 20 and 30 year fixed rates and adjustable rates available. Call 1-800-366-6041 to pre-qualify or go to www.homeloancu.com
 Call us for current rates

Visa Platinum: 9.9% - No annual fee, 25 day grace period
Visa Classic: 12.9% - No annual fee, 25 day grace period

Personal Computer: Finance the purchase of a new PC, 90% financing
 8.50% - 16.25% APR Terms from 18 – 36 months, borrow up to \$5,000

New Boats, 4 Wheelers, Jet Skis, Lawn Tractors: Up to 100% financing, .25% discount for 10% down, .50% discount for 20% down
 6.25% - 13.75% APR Terms from 36 - 72 months

Used Boats, 4 Wheelers, Jet Skis, Lawn Tractors: Up to 75% financing
 8.25% - 15.75% APR Terms from 36 - 60 months

New Motor Homes / Travel Trailers: Up to 100% financing, .5% discount for 20% down
 6.75% - 15.75% APR Terms from 5 – 10 years

Used Motor Homes / Travel Trailers: Up to 80% financing
 9.25% - 18.00% APR Terms from 5 – 10 years

Land Loans: Purchase acreage or raw land
 6.75 – 14.25% APR Terms from 10 – 12 years, 80% LTV financing

APR = Annual Percentage Rate. Loans granted on approved credit. Rates, terms and loan limits determined by credit criteria. Rates are subject to change. Call for current rates.

**LIKE IT?
 Let Us
 Finance It
 For You**

Legislation passed in response to Hurricane Katrina to provide relief and charitable incentives



The Katrina Emergency Tax Relief Act of 2005 was passed and signed into law providing relief for individuals affected by Hurricane Katrina ("the Hurricane") and to provide incentives for charitable donations.

If you fall into one of the following three categories, you may qualify for tax relief:

- Incentives for individuals or businesses providing charitable donations
- Relief for individuals in the affected region
- Relief for businesses in the affected region and employers hiring workers from the affected region

For a more detailed summary on either of these topics, visit www.brecofcu.com.

Parents of High School Seniors: Financial Aid Application Time Is Here!

If you are a parent of a high school senior planning to pursue a college education and you are trying to make your share of the costs more easily affordable, then your best bet is to understand the first step in the financial aid application process, completing the Free Application of Federal Student Aid (FAFSA). Furthermore, it is just as important to understand the "purpose" of the FAFSA.

In order to receive any type of aid in the form of scholarships, TOPS, student loans, work-study, institutional aid or aid from federal and state governments, you must complete the FAFSA.

The purpose of the FAFSA is to simply take an accounting of both the parent's and student's assets and income to quantify your Expected Family Contribution (EFC). Sort of like your tax return calculates your income tax liability. Your EFC is the amount of money that the federal government expects your family to contribute to the student's college education.

Remember that financial aid is on a "first come, first serve" basis. Therefore, it is important to get your student in the system quickly and complete your FAFSA using estimated numbers beginning January 1st of your student's high school senior year. Visit www.fafsa.ed.gov to request your PIN and complete the FAFSA.

Provided by Gregory A. Fulcher, CFP®, CSA, CERTIFIED FINANCIAL PLANNER™ practitioner, 1-888-723-9223, Gregory.a.fulcher@ampf.com